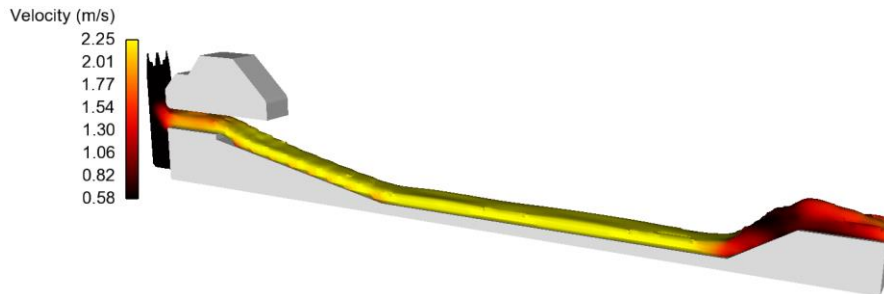


Supplementary data

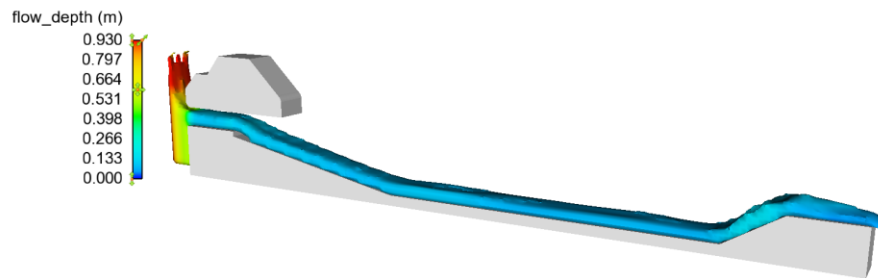
Numerical Investigation of Hydraulic Performance in Makhool Spillway Dam

The simulation was run for all the indicated points.

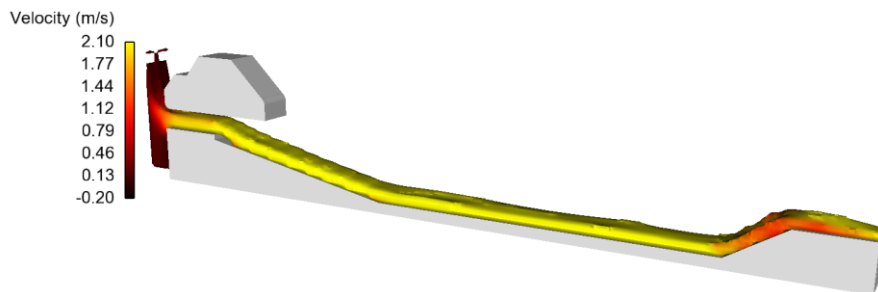
G_0 is 0.16- Q is 0.057- V_{num} -RNG=2.01



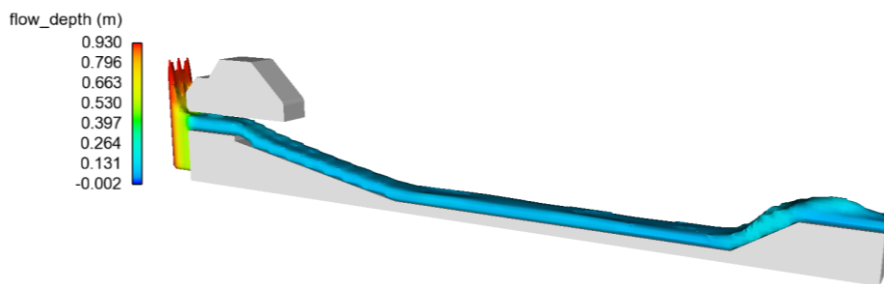
G_0 is 0.16- Q is 0.057- Y_{num} -RNG=0.137



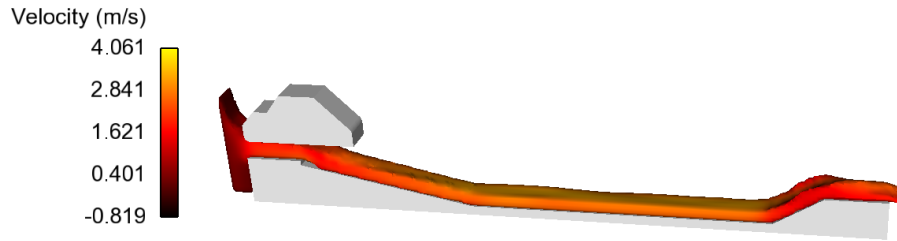
G_0 is 0.16- Q is 0.057- V_{num} -k-e=2.01



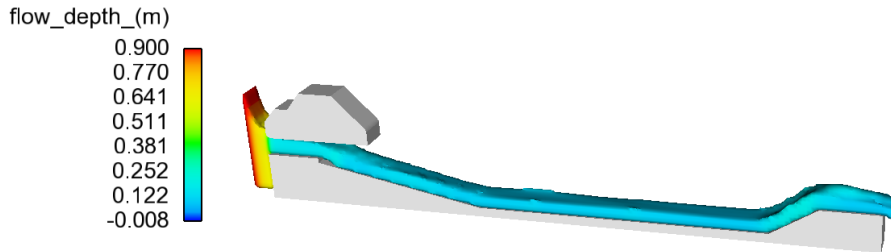
G_0 is 0.16- Q is 0.057- Y_{num} -k-e=0.131



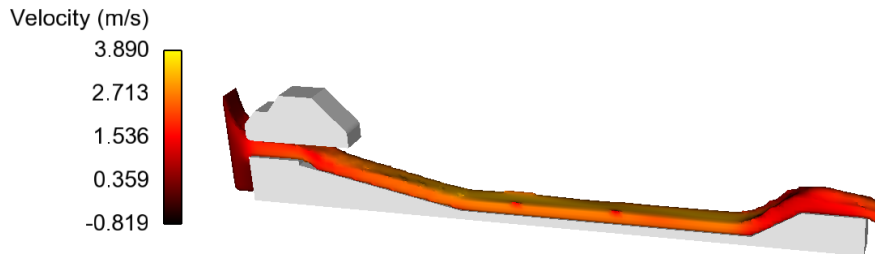
G_0 is 0.16- Q is 0.07866- V_{num} -RNG=2.8429



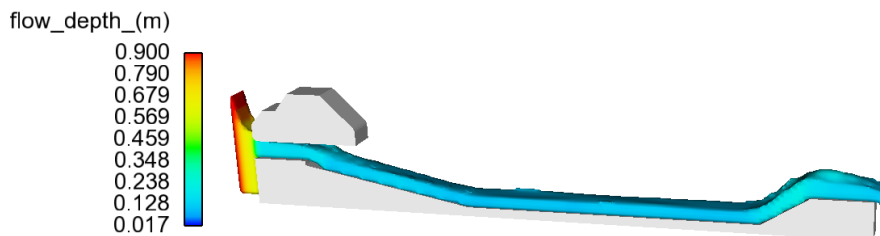
G_0 is 0.16- Q is 0.07866- Y_{num} -RNG=0.122



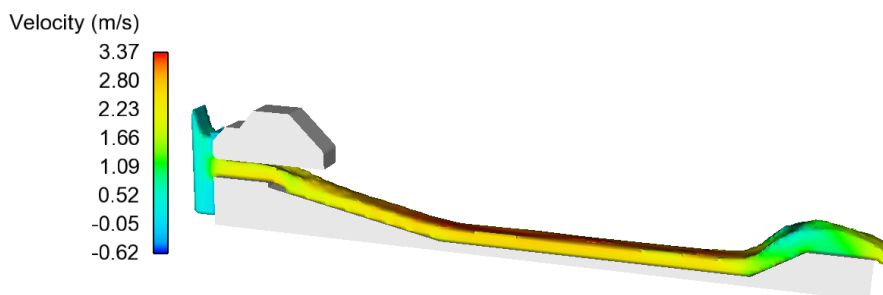
G_0 is 0.16- Q is 0.07866- V_{num} -k-e=2.71



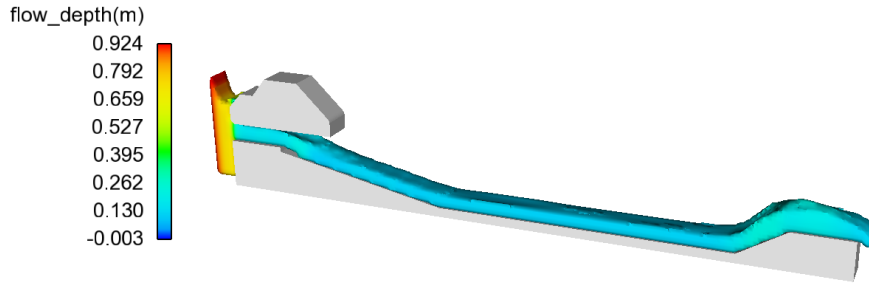
G_0 is 0.16- Q is 0.07866- Y_{num} -k-e=0.128



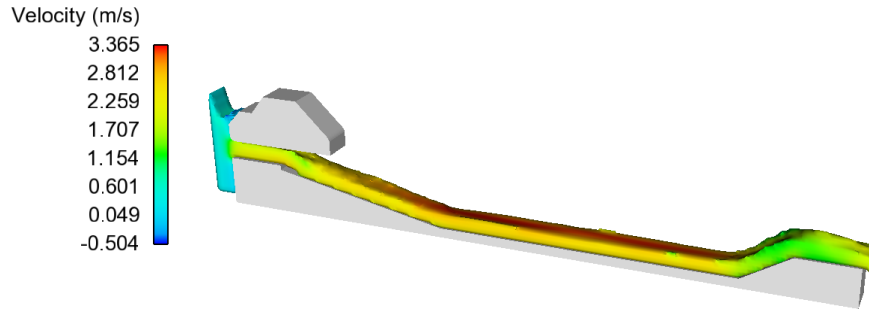
G_0 is 0.16- Q is 0.083- V_{num} -RNG=2.8107



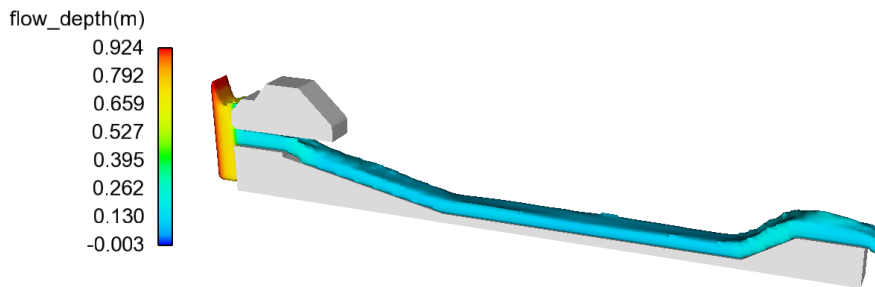
G_0 is 0.16- Q is 0.0836- Y_{num} -RNG=0.13



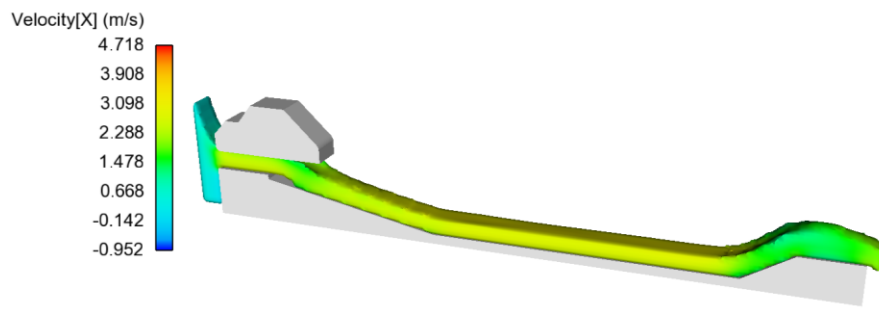
G_0 is 0.16- Q is 0.083- V_{num} -K-e=2.8142



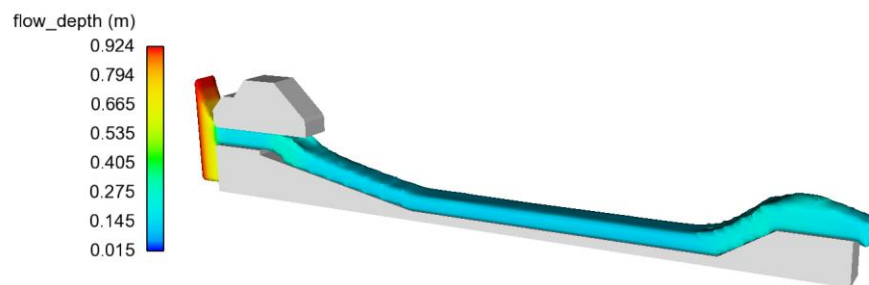
G_0 is 0.16- Q is 0.083- Y_{num} -K-e=0.130



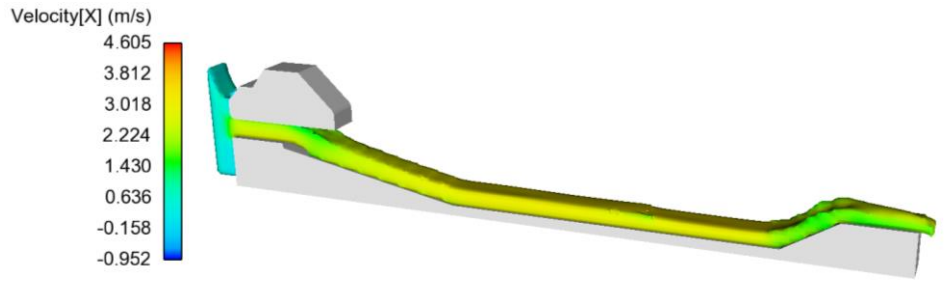
G_0 is 0.16- Q is 0.1- V_{num} -RNG=3.01



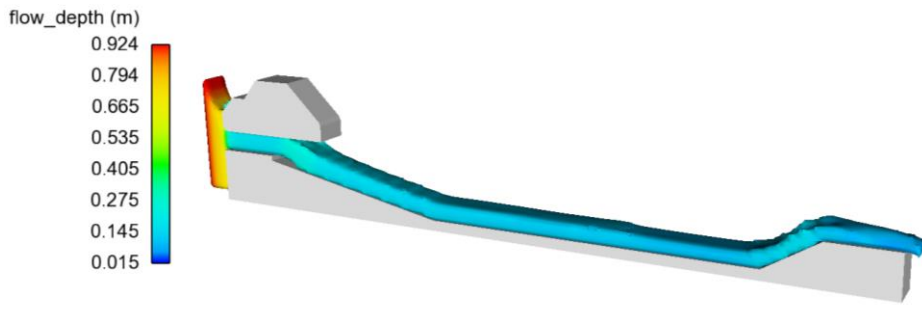
G_0 is 0.16- Q is 0.1- Y_{num} -RNG=0.145



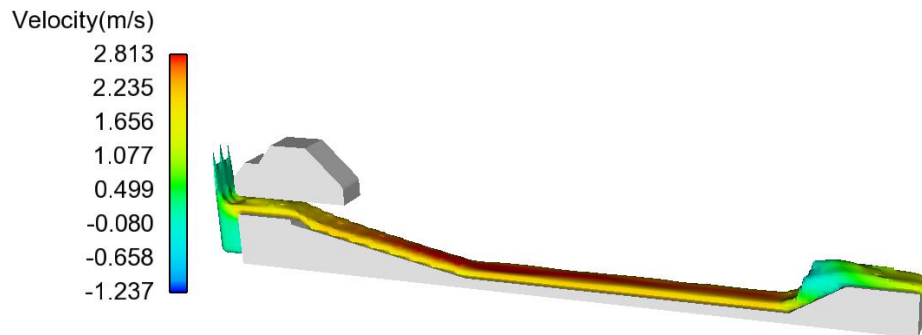
G_0 is 0.16- Q is 0.1- V_{num} -K-e=3.019



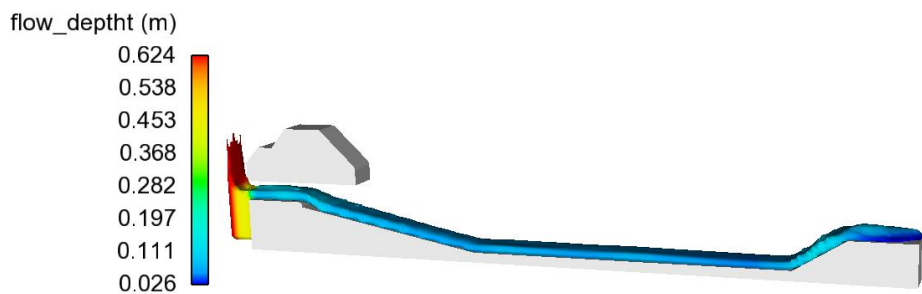
G_0 is 0.16- Q is 0.1- V_{num} -K-e=0.145



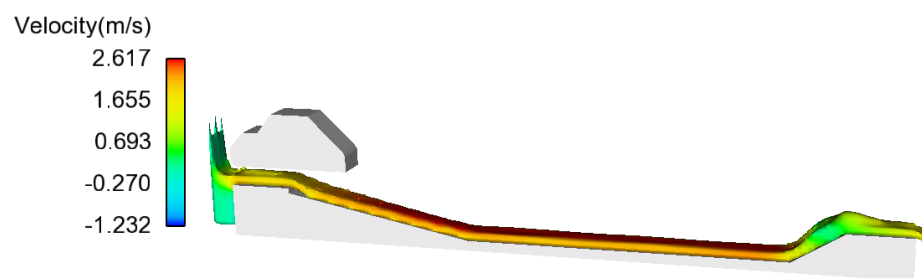
G_0 is 0.155- Q is 0.0405- V_{num} -RNG=1.6563



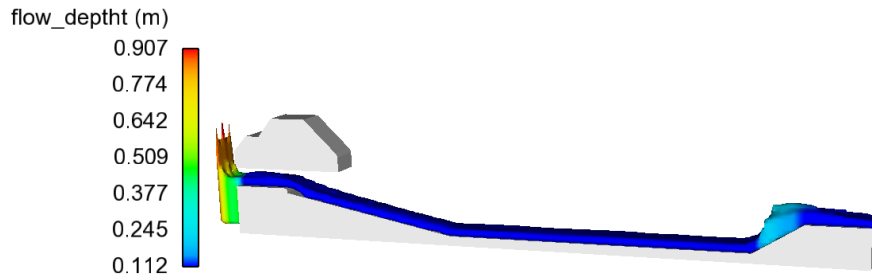
G_0 is 0.155- Q is 0.0405- Y_{num} -RNG=0.111



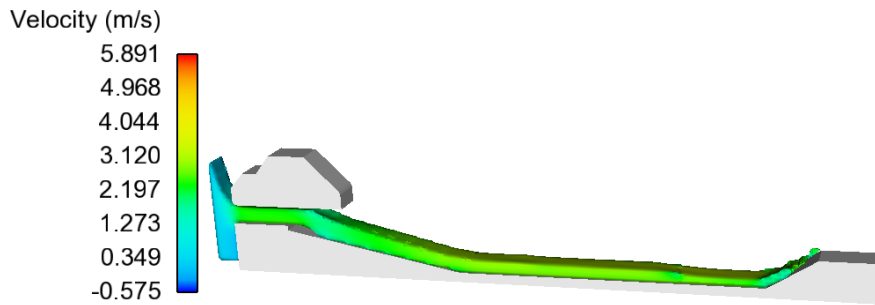
G_0 is 0.155- Q is 0.0405- V_{num} -K-e =1.66



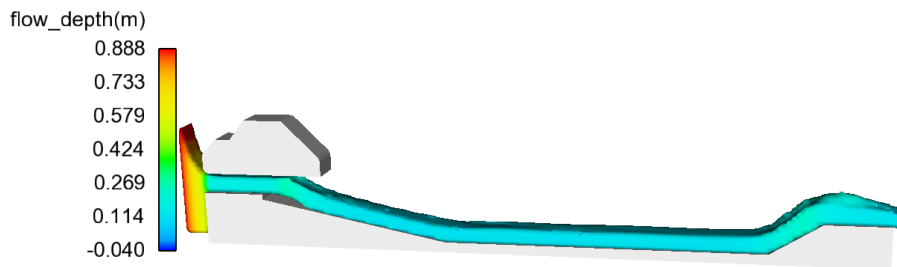
G_0 is 0.155- Q is 0.0405- Y_{num} -K-e =0.114



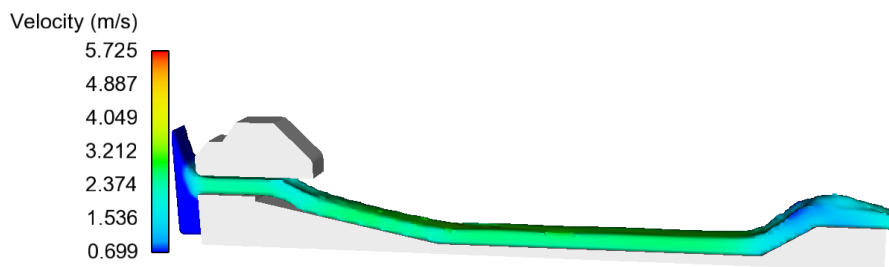
G_0 is 0.15- Q is 0.083- V_{num} -RNG =3.12



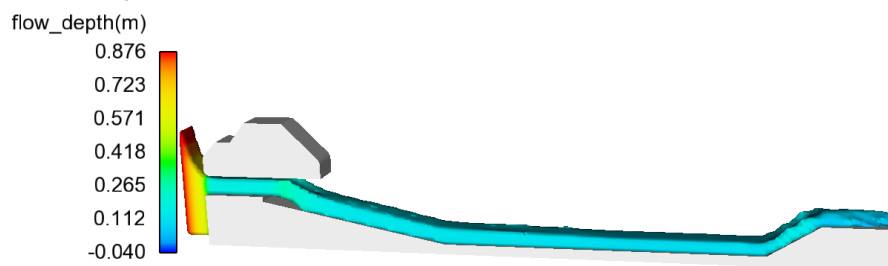
G_0 is 0.15- Q is 0.083- Y_{num} -RNG =0.115



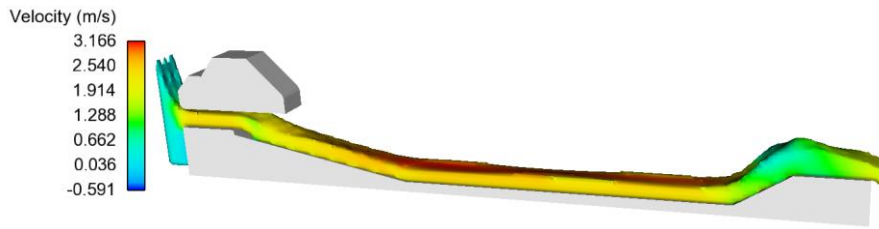
G_0 is 0.15- Q is 0.083- V_{num} -K-e =3.21



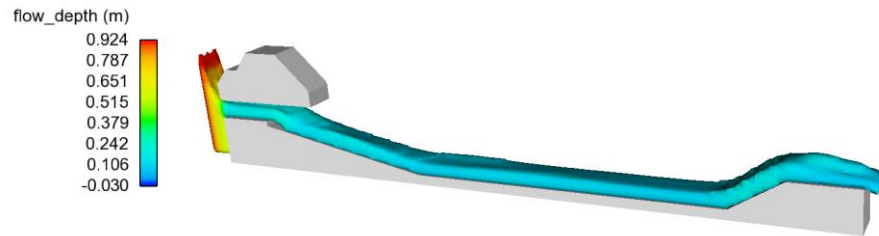
G_0 is 0.15- Q is 0.083- Y_{num} -K-e =0.112



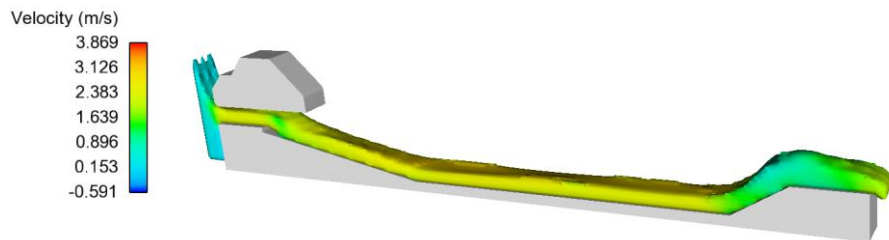
G_0 is 0.15- Q is 0.07866- V_{num} -RNG =3.1



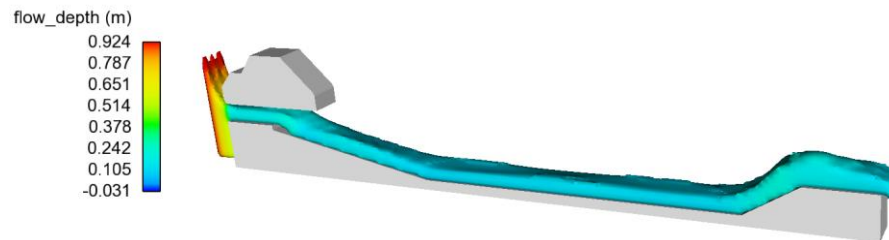
G_0 is 0.15- Q is 0.07866- Y_{num} -RNG =0.106



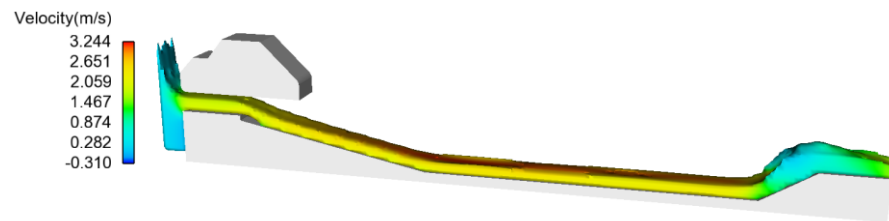
G_0 is 0.15- Q is 0.07866- V_{num} -K-e =3.125



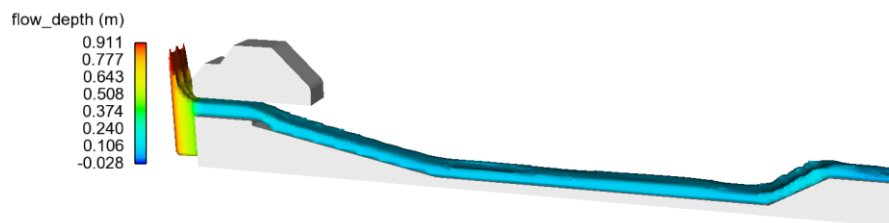
G_0 is 0.15- Q is 0.057- Y_{num} -K-e =0.105



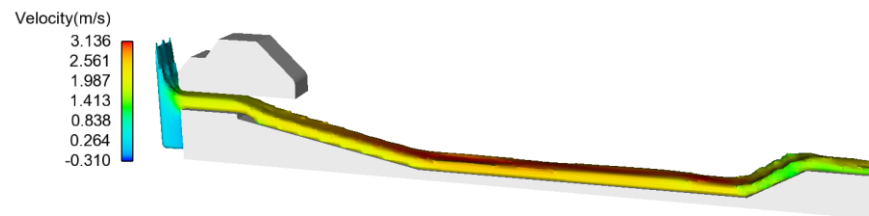
G_0 is 0.15- Q is 0.057- V_{num} -RNG =2.56



G_0 is 0.15- Q is 0.057- Y_{num} -RNG =0.106



G_0 is 0.15- Q is 0.057- V_{num} -K-e =2.567



G_0 is 0.15- Q is 0.057- Y_{num} -K-e =0.106

